

# Amalgamated

## PROPERTY MAINTENANCE

The Amalgamated Group  
Servicing South East Queensland Since 1978

QBCC 1097876

Q1



Surfers Aquarius



Palazzo Versace

- Abseiling
- Balustrading
- Concrete Repair
- High Pressure Water Cleaning
- Painting
- Roof Anchors/Plans
- Tiling/Carpet
- Waterproofing
- Window Replacement

## Amalgamated Group

*Amalgamated Painting Service* was established on the Gold Coast in 1978 by the Poletto family and remains a privately owned, family run company to this day.

*Amalgamated Property Maintenance* was established in 1999 to service the Body Corporate and Repaint Industry and now, *Amalgamated Property Maintenance* is the only TRUE ONE STOP SHOP for undertaking Total Building Refurbishments with our Open QBCC Licence.

**BUILDING REFURBISHMENT - PAINTING - REMEDIAL SPECIALISTS**

**BRISBANE • GOLD COAST • SUNSHINE COAST**

E: [info@amalgamatedgroup.com.au](mailto:info@amalgamatedgroup.com.au)

[www.amalgamatedgroup.com.au](http://www.amalgamatedgroup.com.au)



## New Construction

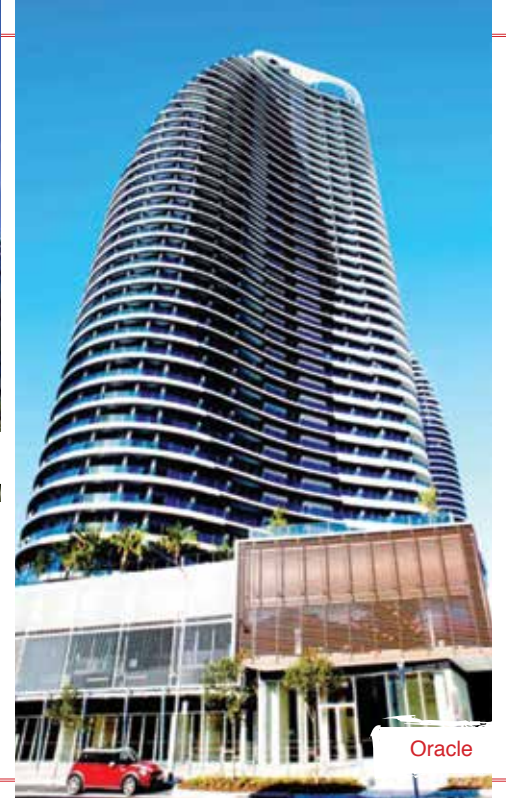
*Amalgamated Painting Service has a long and proud association with the Gold Coast sky line.*

From the beginning in 1978, Amalgamated Painting Service has been associated with many new Towers on the Gold Coast, including;

- Palazzo Versace
- Suncity Resort
- Bel Air
- Reflections
- Q1
- Circle on Cavill
- Oracle
- Chevron Renaissance
- Gold Coast University Hospital
- Jewel



Circle on Cavill



Oracle



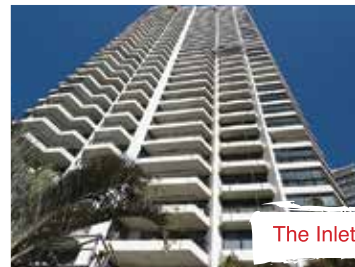
Avalon



Peninsula Apartments



Mantra Legends



The Inlet

## Hi Rise Repaint

Since Amalgamated Property Maintenance was formed, many Hi Rise Buildings on the Gold Coast have been transformed, some with major remedial work being carried out prior to painting. We work closely with Project Engineers,

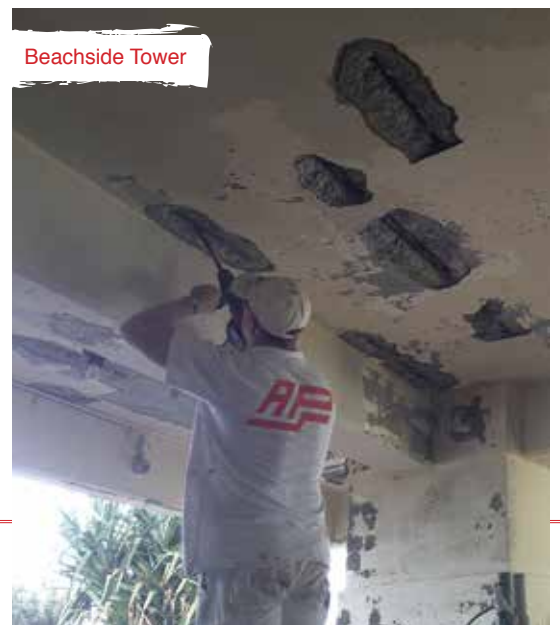
Project Managers, Body Corporates and Paint Manufacturers to ensure the *best possible outcome* for the unit owner.

## Concrete Rectification

Concrete Cancer can affect any building in which reinforced concrete is used. *Early treatment* of spalling concrete will reduce the extent of the damage and be less expensive to repair.

Repairing involves:

1. Removal of the spalled concrete
2. Cleaning and treatment of the rust affected steel
3. Application of a suitable repair material
4. Reforming the concrete to the original profile



Beachside Tower



## Abseiling

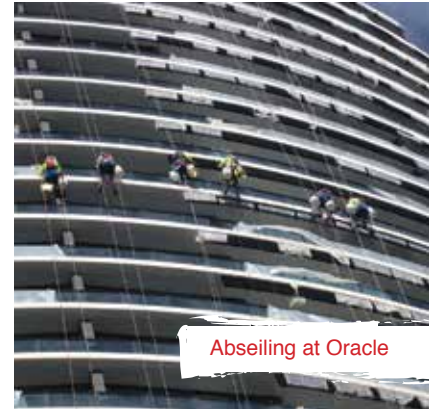


Platinum on the Beach

Amalgamated Property Maintenance offers a *team of fully qualified abseilers and painters.*

This method of Hi Rise workmanship can result in:

- Reduced hire cost of scaffold
- Increased safety to workers and public
- Speeds up repaint process



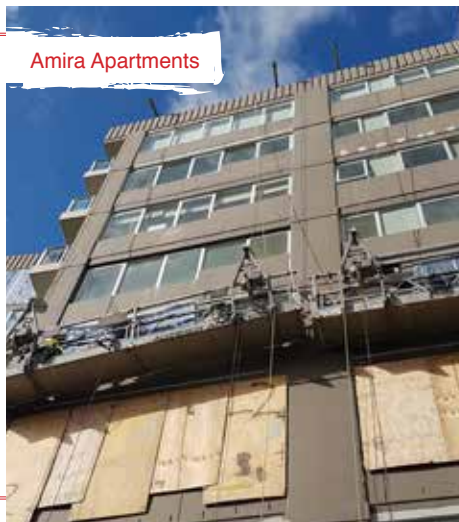
Abseiling at Oracle

## Balustrades and Windows

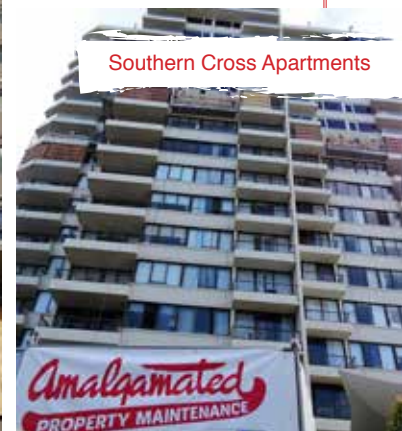
Amalgamated Property Maintenance is experienced in undertaking all forms of window and balustrade removal and replacement programs.

*“Our commitment is your guarantee of high quality workmanship and efficient, cost effective service.”*

Our most recent major projects; Surfers Aquarius, Amira Apartments, Solnamara and Southern Cross Apartments



Amira Apartments



Southern Cross Apartments



Bayview Gardens

## Water Proofing

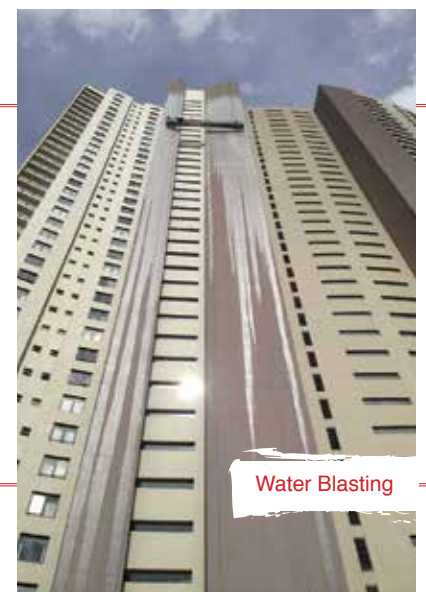
There are *many types of water proofing products* on the market today.

These products can be applied to walls, floors and other cementitious surfaces.

## Water Blasting

Hi Pressure water blasting is *generally used in paint preparation* but can also form part of a Paint Manufacturers Warranty. Buildings, especially those in a coastal area will attract salts and pollutants.

Washing down your building regularly will extend the life of your coating.



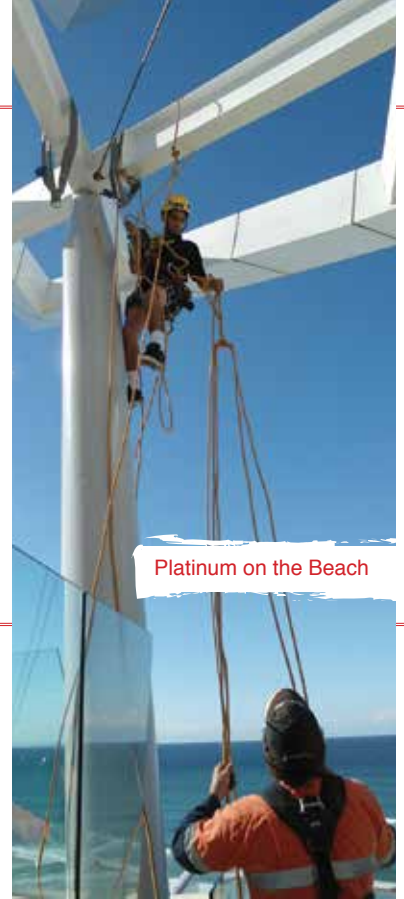
Water Blasting

## Health & Safety

Amalgamated Property Maintenance is committed to maintaining it's first class track record in an Industry where *safety is paramount*.

*This is achieved through:*

- Complying with statutory requirements, codes, standards and guidelines
- Setting up objectives and targets with the aim of eliminating work related incidents in relation to our activities, products and services
- Defining roles and responsibilities
- Having a dedicated full time WHSO



Platinum on the Beach



Surfers Aquarius



Calais

## Building Facade Refurbishment

- Surfers Aquarius is the largest external building refurbishment project ever undertaken on the Gold Coast with works exceeding \$9M.
- Encompassing the building with 9 Mast Climbers allowed APM to work at increased speed levels with heightened safety measures.
- The project involved replacing 1000 windows and doors, waterproofing 190 balconies, laying 5500m<sup>2</sup> of tiles, installing 2700m of new balustrade and a total building repaint and numerous concrete spalling repairs.

### OUR TEAM

*John Poletto - Director*

*Darrick Poletto - Director*

*Matt Kennedy - Director Brisbane & Sunshine Coast*

*Tony Beales - Gold Coast Manager*

*Richard Page - Gold Coast BDM*

*Phil Riley - Projects Supervisor (25+ years)*

*Steve Franklin - Site Supervisor (25+ years)*

*Russell Seidenkranz - Site Supervisor*

*Andy Wright - Building Supervisor*

*Glenn Davies - Window Supervisor*

*Scott Clarke - Rope Access Supervisor*

*Norman Evans - W.H.S.O.*

*Brenda Boff - Financial Controller*

*Helen Hall - Administration*

*Sharon Vandy - Payroll Officer*

**Amalgamated Property Maintenance now undertakes all Internal and External Refurbishment and Remedial works. Email or call us and we will send one of our experienced staff out to talk to you or your Committee!**

## BUILDING REFURBISHMENT - PAINTING - REMEDIAL SPECIALISTS

### BRISBANE

PO Box 249  
Rochedale South QLD 4123  
Phone: 0438 314 852

### GOLD COAST

PO Box 965  
Ashmore City QLD 4214  
Phone: (07) 5597 6389

### SUNSHINE COAST

PO Box 1484  
Buderim QLD 4556  
Phone: 0438 314 852

E: [info@amalgamatedgroup.com.au](mailto:info@amalgamatedgroup.com.au)  
[www.amalgamatedgroup.com.au](http://www.amalgamatedgroup.com.au)